

**NOTES:-**

- Fix 40 x 45 to boxing to form rebate
- Install door plumb & square
- Ensure bottom track is straight & level

**Threshold Detail for Stacker/Sliding Door**

Scale:- NTS

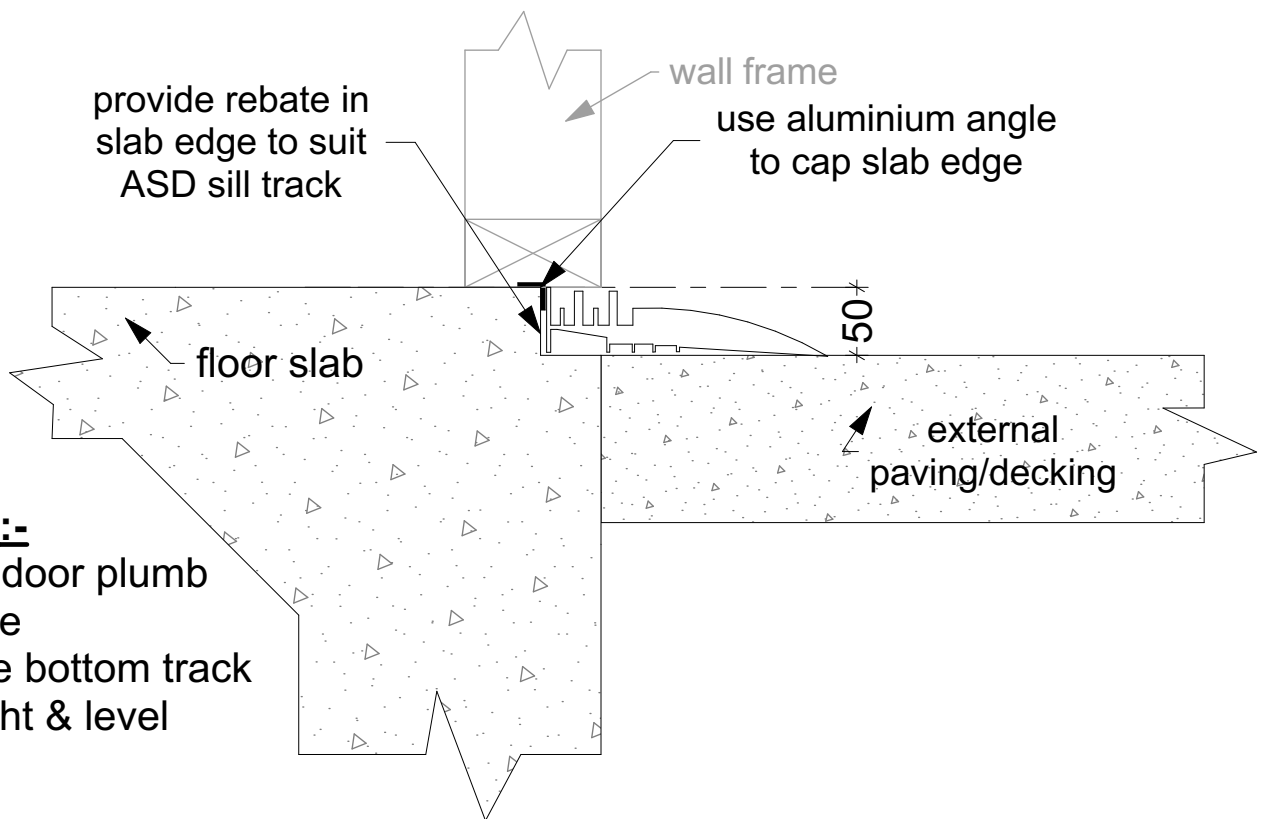
<b>Detail</b>			
Threshold Detail For Stacker/Sliding Door			
<b>Drawn by</b>	C.B	<b>Date</b>	25/07/2019
<b>Checked</b>		<b>Date</b>	

**DIVERSEBUILDERS**

P.O Box 196  
 114 Melville Street  
 Numurkah VIC 3636  
 T 03 5862 2712  
 F 03 5862 3583  
 E info@diversebuilders.com.au  
 W diversebuilders.com.au



**WARNING:-**  
 All information and designs contained within this document are copyright to Diverse Builders  
 RBP Reg No. DBU-8259 - CBU-6016 & NSW 89500C



## Minimum Threshold Detail for Stacker/Sliding Door

Scale:- NTS

<b>Detail</b>			
Minimum Threshold Detail For Stacker/Sliding Door no brick rebate			
<b>Drawn by</b>	C.B	<b>Date</b>	25/07/2019
<b>Checked</b>		<b>Date</b>	

### DIVERSEBUILDERS

P.O Box 196  
 114 Melville Street  
 Numurkah VIC 3636  
 T 03 5862 2712  
 F 03 5862 3583  
 E info@diversebuilders.com.au  
 W diversebuilders.com.au



**WARNING:-**  
 All information and designs contained within  
 this document are copyright to Diverse Builders  
 RBP Reg No. DBU-8259 - CBU-6016 & NSW 89500C