

Typical Robe/Linen/Store/Pantry Plan

Detail			
Typical Robe/Linen/Store/Pantry Plan			
Drawn by	M.F	Date	2013
Checked		Date	

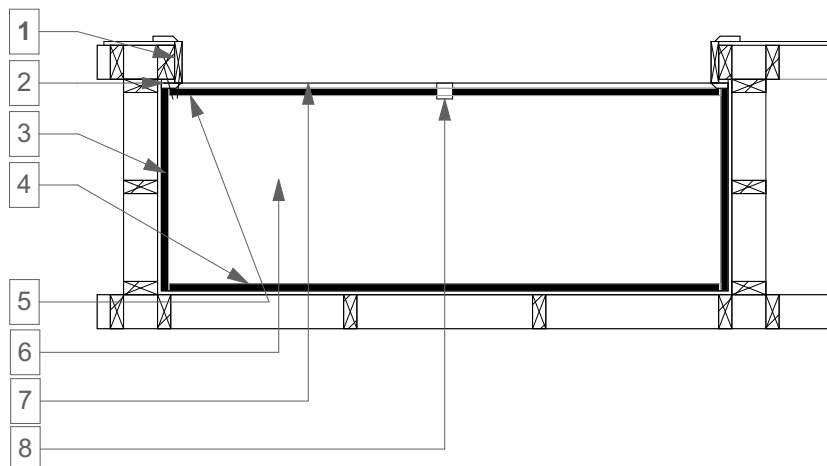
DIVERSEBUILDERS

P.O Box 196
 114 Melville Street
 Numurkah VIC 3636
 T 03 5862 2712
 F 03 5862 3583
 E info@diversebuilders.com.au
 W diversebuilders.com.au



WARNING:-
 All information and designs contained within
 this document are copyright to Diverse Builders
 RBP Reg No. DBU-8259 - CBU-6016 & NSW 89500C

1. install jamb
2. fit 67x15 architrave to inside of jamb and mitre tops
3. skew nail 42x19 side shelf supports into corner studs
4. nail 42x19 shelf support to rear of robe
5. nail 42x19 shelf support into jamb and stud
6. fit shelf to 42x19 supports
7. nail & glue architrave to face of shelf & 42x19 with bevelled edge to top
8. 42x42 KD prop to centre of shelves, for shelves over 1350mm



Robe/Linen/Store/Pantry Construction Detail

SCALE NTS

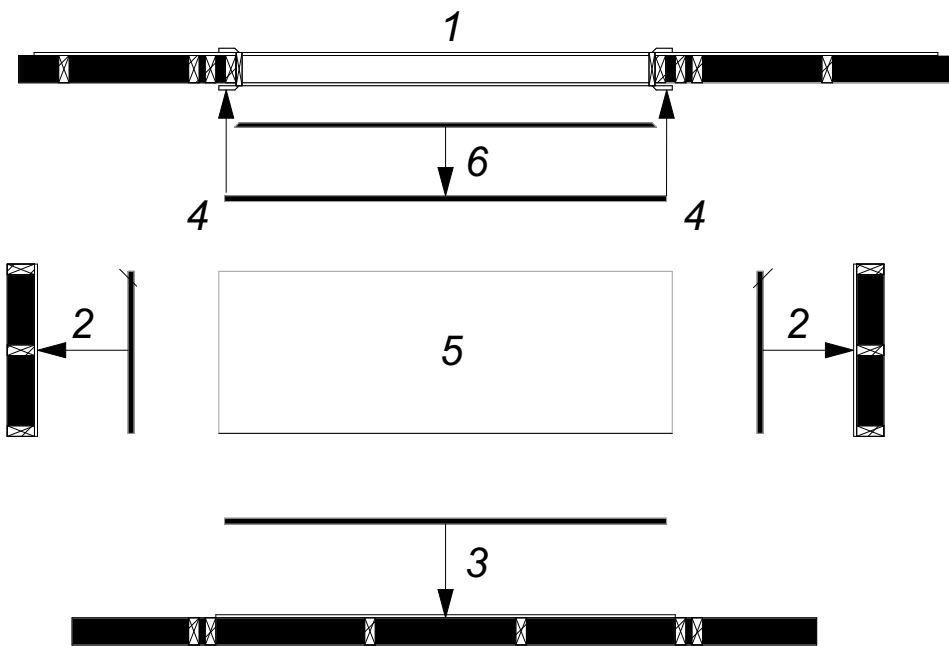
Detail			
Robe/Linen/Store/Pantry Construction Detail			
Drawn by	M.F	Date	2013
Checked		Date	

DIVERSEBUILDERS

P.O Box 196
 114 Melville Street
 Numurkah VIC 3636
 T 03 5862 2712
 F 03 5862 3583
 E info@diversebuilders.com.au
 W diversebuilders.com.au



WARNING:-
 All information and designs contained within this document are copyright to Diverse Builders
 RBP Reg No. DBU-8259 - CBU-6016 & NSW 89500C



Step 1:- jamb & arch opening

Step 2:- skew nail 42x19 pine shelf supports into corner stud

Step 3:- nail 42x19 pine shelf support to rear of robe

Step 4:- nail 42x19 pine shelf support to jamb studs through arches

Step 5:- fit shelf to pine supports

Step 6:- nail & glue arch to face of shelf

Robe/Linen/Store/Pantry Exploded Detail

SCALE NTS

Detail			
Robe/Linen/Store/Pantry Exploded Detail			
Drawn by	M.F	Date	2013
Checked		Date	

DIVERSEBUILDERS

P.O Box 196
 114 Melville Street
 Numurkah VIC 3636
 T 03 5862 2712
 F 03 5862 3583
 E info@diversebuilders.com.au
 W diversebuilders.com.au



WARNING:-

All information and designs contained within this document are copyright to Diverse Builders RBP Reg No. DBU-8259 - CBU-6016 & NSW 89500C